



# IMPACT

## COLLECTION LINEATIONS



<b>Manufacturing process</b> Tufting 1/10" looppile	<b>Méthode de fabrication</b> Tuftée 1/10" poil bouclé	<b>Herstellungsverfahren</b> Getuftet 1/10" Schlingenpol	<b>Fabricatiemethode</b> Getuft 1/10" lussenpool
<b>Pile content</b> 100% PP Stainsafe®	<b>Composition du velours</b> 100% PP Stainsafe®	<b>Polmaterial</b> 100% PP Fleckweg®	<b>Pool Samenstelling</b> 100% PP Stainsafe®
<b>Pile weight</b> Ca. 550 g/m <sup>2</sup>	<b>Poids du velours</b> Ca. 550 g/m <sup>2</sup>	<b>Polgewicht</b> Ca. 550 g/m <sup>2</sup>	<b>Poolgewicht</b> Ca. 550 g/m <sup>2</sup>
<b>Total weight</b> Ca. 4.300 g/m <sup>2</sup>	<b>Poids totale</b> Ca. 4.300 g/m <sup>2</sup>	<b>Gesamtgewicht</b> Ca. 4.300 g/m <sup>2</sup>	<b>Totaal gewicht</b> Ca. 4.300 g/m <sup>2</sup>
<b>Pile height</b> Ca. 5 mm	<b>Hauteur du velours</b> Ca. 5 mm	<b>Florhöhe</b> Ca. 5 mm	<b>Poolhoogte</b> Ca. 5 mm
<b>Total height</b> Ca. 7 mm	<b>Hauteur totale</b> Ca. 7 mm	<b>Gesamthöhe</b> Ca. 7 mm	<b>Totale hoogte</b> Ca. 7 mm
<b>Tuft density</b> Ca. 189.120/m <sup>2</sup>	<b>Nombre de touffes</b> Ca. 189.120/m <sup>2</sup>	<b>Noppenzahl</b> Ca. 189.120/m <sup>2</sup>	<b>Aantal noppen</b> Ca. 189.120/m <sup>2</sup>
<b>Size</b> 50 x 50 cm	<b>Dimensions</b> 50 x 50 cm	<b>Abmessung</b> 50 x 50 cm	<b>Afmetingen</b> 50 x 50 cm
<b>Packaging</b> 5 m <sup>2</sup>	<b>Emballage</b> 5 m <sup>2</sup>	<b>Verpackung</b> 5 m <sup>2</sup>	<b>Verpakking</b> 5 m <sup>2</sup>
<b>Antistatique</b> < 2 kV	<b>Antistatique</b> < 2 kV	<b>Antistatisch</b> < 2 kV	<b>Antistatisch</b> < 2 kV
<b>Fire class</b> C <sub>fl</sub> -s1 (EN 13501-1) Centexbel 0493-CPR-0130	<b>Classement feu</b> C <sub>fl</sub> -s1 (EN 13501-1) Centexbel 0493-CPR-0130	<b>Brandverhaltensklasse</b> C <sub>fl</sub> -s1 (EN 13501-1) Centexbel 0493-CPR-0130	<b>Brandklasse</b> C <sub>fl</sub> -s1 (EN 13501-1) Centexbel 0493-CPR-0130
<b>Sound insulation</b> 22 dB	<b>Isolation aux bruits d'impact</b> 22 dB	<b>Trittschalldämmung</b> 22 dB	<b>Geluidsisolatie</b> 22 dB
<b>Fastness to light</b> 5-6	<b>Solidité à la lumière</b> 5-6	<b>Lichtechtheit</b> 5-6	<b>Lichtechtheid</b> 5-6
<b>Water fastness</b> 4-5	<b>Solidité à l'eau</b> 4-5	<b>Wasserechtheit</b> 4-5	<b>Waterrechtheid</b> 4-5

EN 14041

16

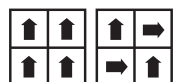
Balta Industries - Wakkensteenweg 2  
BE - 8710 Sint-Baafs-Vijve

**DOP: 1010#BIOACL**

Textile Floor Covering EN 1307  
Notified body 0493

www.baltamediabank.com

90CF84A0  
www.pro-dis.info



MAINTENANCE: Spillage should be taken up promptly and surface stains removed by an appropriate method as soon as possible. In heavy traffic areas the carpet should be cleaned daily with a vacuum cleaner. Periodic maintenance should be carried out by professional cleaning staff using appropriate extraction systems.  
COLOUR MARCHING: As with all textile products there will be a variance in shade from batch to batch. Any samples supplied are as close a representation to the actual carpet as the production process will allow. An exact colour match between different dye batches cannot be guaranteed.



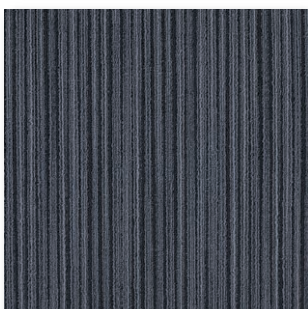
# IMPACT

COLLECTION

# LINEATIONS

L C T<sup>®</sup> FIRST

Luxury Carpet Tiles



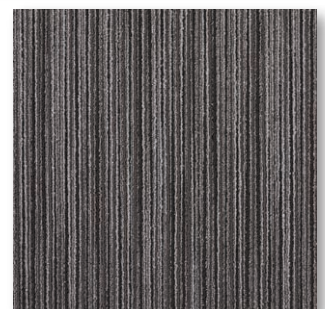
▲ 380



▲ 880



▲ 900



▲ 980