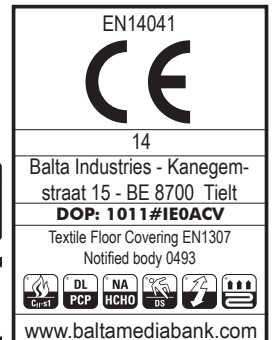
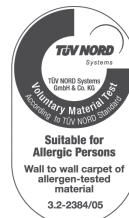
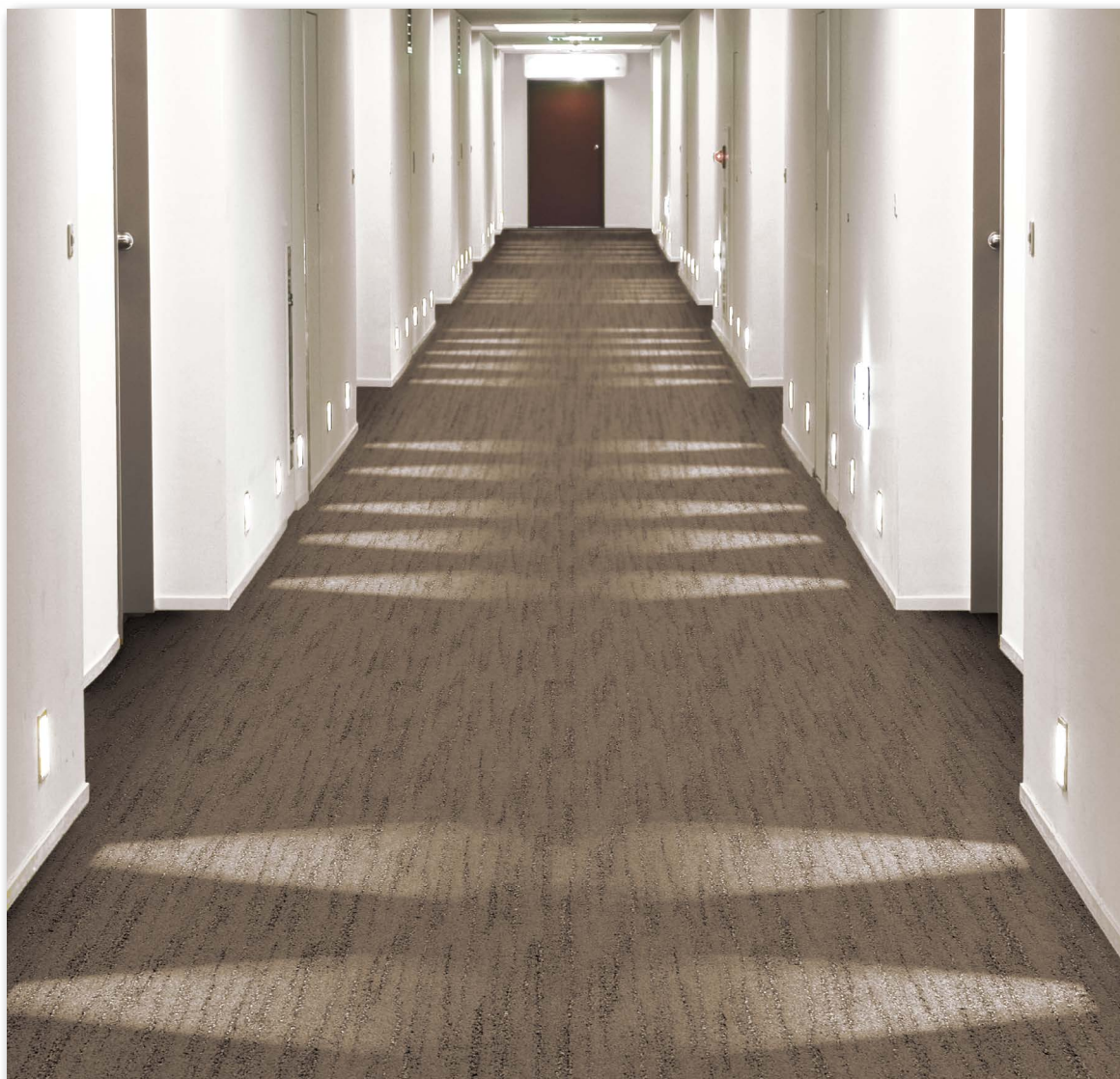
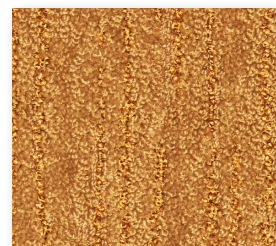


<b>CONSTRUCTION</b>	Tufting 1/10" struct.loop pile	<b>PERMANENTLY ANTISTATIC</b>	ISO 6356
<b>STRUCTURE</b>	Tufté 1/10" bouclé structuré	<b>ANTISTATIQUE PERMANENT</b>	< 2 kV
<b>STRUKTUR</b>	Getuftet 1/10" Strukturschlinge	<b>PERMANENT ANTISTATISCH</b>	
<b>STRUCTUUR</b>	Getuft 1/10" structuurlus	<b>PERMANENT ANTISTATISCH</b>	
<b>PILE MATERIAL</b>	100% PA 6 IMPREL®	<b>IMPACT NOISE RATING</b>	ISO 140-8
<b>COMPOSITION DU VELOURS</b>		<b>ISOLATION PHONIQUE</b>	26 dB ΔLw
<b>POLMATERIAL</b>		<b>TRITTSCHALLVERBESSERUNG</b>	
<b>POOLMATERIAAL</b>		<b>GELUIDSISOLATIE</b>	
<b>PRIMARY BACKING</b>	Woven PP	<b>SOUND ABSORPTION</b>	ISO 354
<b>SUPPORT</b>	PP tissé	<b>ABSORPTION PHONIQUE</b>	0.20 αw
<b>TRÄGERMATERIAL</b>	PP Bändchen	<b>SCHALLABSORPTIONSGRAD</b>	
<b>TUFTDOEK</b>	PP geweven	<b>GELUIDSABSORPTIE</b>	
<b>SECONDARY BACKING</b>	Action Back	<b>THERMAL RESISTANCE</b>	ISO 8302
<b>DOSSIER</b>		<b>RÉSISTANCE THERMIQUE</b>	0.09 m² K/W
<b>RÜCKEN</b>		<b>WÄRMEDURCHLASSWIDERSTAND</b>	
<b>TAPIJTRUG</b>		<b>WARMTEDOORLAATWEERSTAND</b>	
<b>PILE WEIGHT</b>	Ca. 1.100 gr/m²	<b>FASTNESS TO LIGHT</b>	ISO 105-B02
<b>POIDS DU VELOURS</b>		<b>SOLIDITÉ A LA LUMIÈRE</b>	≥ 5-6
<b>POLEINSATZGEWICHT</b>		<b>LICHTECHTHEIT</b>	
<b>POOLGEWICHT</b>		<b>LICHTECHTHEID</b>	
<b>TOTAL WEIGHT</b>	Ca. 2.060 gr/m²	<b>COLOUR FASTNESS TO WATER</b>	EN ISO 105-E01
<b>POIDS TOTAL</b>		<b>SOLIDITÉ À L'EAU</b>	≥ 4-5
<b>GESAMTGEWICHT</b>		<b>WASSERRECHTHEIT</b>	
<b>TOTAAL GEWICHT</b>		<b>WATERECHTHEID</b>	
<b>PILE HEIGHT</b>	Ca. 5 mm	<b>RUBBING FASTNESS</b>	EN ISO 105-X12
<b>EPAISSEUR DU VELOURS</b>		<b>SOLIDITÉ AU FROTTMENT</b>	≥ 4
<b>POLHÖHE</b>		<b>REIBECHTHEIT</b>	
<b>POOLHOOGTE</b>		<b>WRIJFECHTHEID</b>	
<b>TOTAL HEIGHT</b>	Ca. 8 mm	<b>FIRE RESISTANCE</b>	EN 13501-1
<b>EPAISSEUR TOTAL</b>		<b>COMPORTEMENT AU FEU</b>	Cfl-s1 (if glued)
<b>GESAMTHÖHE</b>		<b>BRENNVERHALTEN</b>	
<b>TOTALE DIKTE</b>		<b>BRANDGEDRAG</b>	
<b>TUFT DENSITY</b>	Ca. 221 000/m²	<b>NUMBER OF COLOURS</b>	14
<b>NOMBRES DE POINTS</b>		<b>NOMBRES DE COULEURS</b>	
<b>NOPPENZAHL</b>		<b>ANZAHL FARBEN</b>	
<b>AANTAL PUNTEN</b>		<b>AANTAL KLEUREN</b>	
<b>PILE DENSITY</b>	Ca. 0.125 g/cm³	<b>WIDTH</b>	EN ISO 3018
<b>DENSITÉ DU VELOURS</b>		<b>LARGEUR</b>	ca. 400 cm
<b>POLROHDICHTÉ</b>		<b>BREITE</b>	
<b>POOLDICHTHEID</b>		<b>BREEDTE</b>	
<b>CLASSIFICATION</b>	EN 1307		
<b>CLASSEMENT</b>	32 - LC4		
<b>KLASSIFIKATION</b>			
<b>CLASSIFICATIE</b>			
<b>CASTOR CHAIR SUITABILITY</b>	EN 985		
<b>CHAISE À ROULETTES</b>	A: intensive use		
<b>STUHLROLLENEIGNUNG</b>			
<b>ROLSTOELGESCHIKTHEID</b>			
<b>STAIR SUITABILITY</b>	EN 1963		
<b>ESCALIERS</b>	A: intensive use		
<b>TREPPENEIGNUNG</b>			
<b>TRAPPENGESCHIKTHEID</b>			

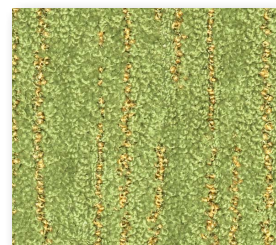




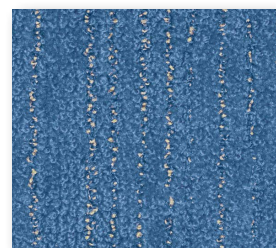
▲ 33



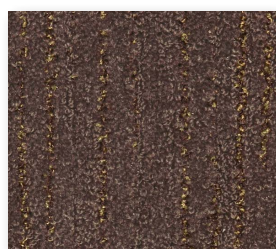
▲ 53



▲ 23



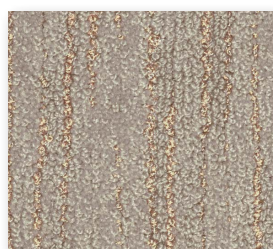
▲ 79



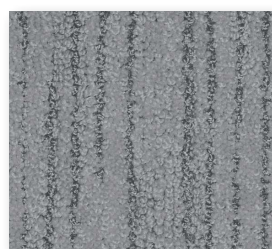
▲ 48



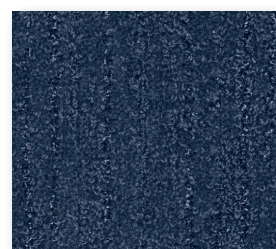
▲ 40



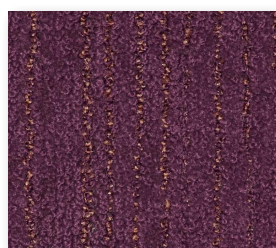
▲ 38



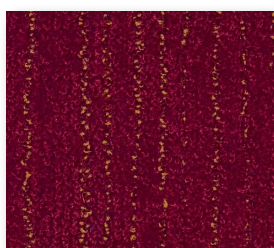
▲ 93



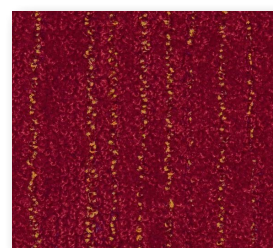
▲ 78



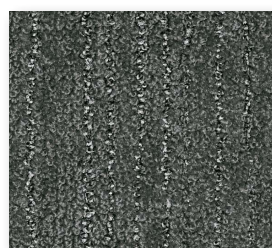
▲ 85



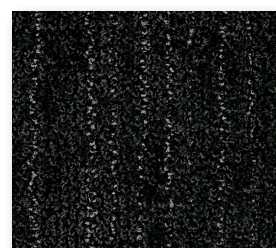
▲ 16



▲ 15



▲ 94



▲ 98